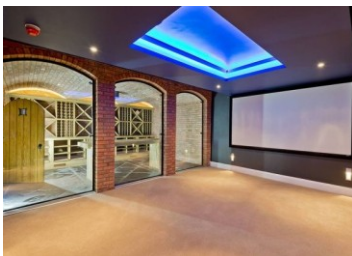




Drainage mound solves  
soak away problem.



Structural Design Services Limited, consulting engineers on the new build project of a large 10,400 sq.ft mansion house with 6 en-suite bedrooms, gym and an indoor pool in Mappleborough Green, were responsible for recommending appropriate means of treating the waste water. The dilemma they faced was that percolation tests to prove porosity of the soil failed, and no ditch was available to discharge into.



The solution was to construct a drainage mound on top of the poor draining land to create a hump within which the

daily flow from the property could dissipate. In order that any subsequent run off from the base of the mound did not cause any problems down the sloping ground to the Bog garden it was imperative that the initial biological treatment was of an extremely high

quality, reducing BOD and Ammonia levels by over 98% and 99% respectively. The drainage mound would further filter the final effluent to such a level whereby little or no impact would be seen within the new Bog Garden area, which might at times have a slight flow over the surface.



S.D.S. Ltd recommended to Developer Hackett and James; builders of exceptional residences, the Bio-Bubble Advanced Aeration Process with the confidence it would provide treatment well within the parameters required.

As with most of the Bio-Bubble systems the robust process is supported by our Advanced GSM Plant Monitoring System.

For Further **Information** Contact Us :  
sales@bio-bubble.com

Tel: +44 (0)2392 200669 | Fax: +44 (0)2392 387460  
Unit L | Fishers Grove | Farlington  
Portsmouth | PO6 1RN | United Kingdom

